

DRAWING INDEX			
DRAWING No.	DRAWING TITLE	REV.	ISSUE DATE
STD DRAWING-SW-200	COVER SHEET	1	31 JAN 24
STANDARD DRAWINGS			
STD DRAWING-SW-210	TYPICAL FOUNDATION DETAILS - FLANGE MOUNTED POST	1	31 JAN 24
STD DRAWING-SW-220	TYPICAL FOUNDATION DETAILS - DIRECT BURY POST	1	31 JAN 24
STD DRAWING-SW-230	TYPICAL ANCHOR ROD DETAILS FOR GROUND MOUNTED POSTS	1	31 JAN 24

SOUNDWALLS - STANDARD DRAWING FOUNDATION DETAILS



TUF-BARRIER® / SILENT PROTECTOR® SOUND WALL

TUF BARRIER and SILENT PROTECTOR panels are manufactured in accordance with
ASTM F3459 - Standard Specification for Rigid Poly Vinyl Chloride (PVC) Exterior Profiles Used for Sound Walls.

January 31, 2024 9:34:37 AM

AIL and TUF BARRIER_OR SILENT PROTECTOR are registered trademarks belonging to AIL INTERNATIONAL INC.

REV NO.	DATE	BY	DESCRIPTION
1	31 JAN 24	BW	GENERAL REVISIONS
0	01 DEC 16	CG	ISSUED AS STANDARD

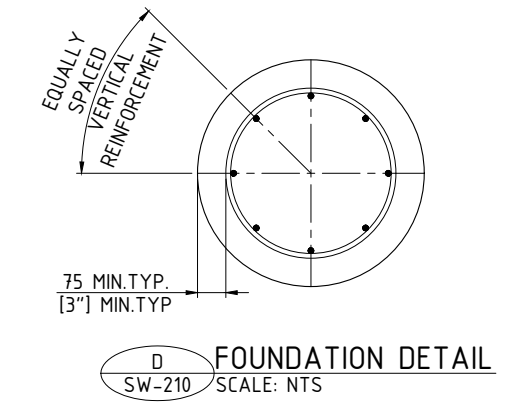
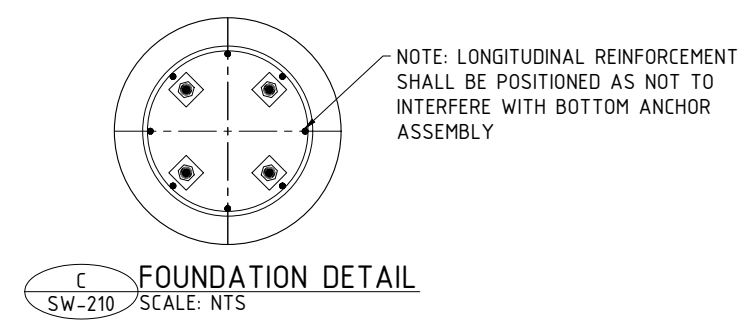
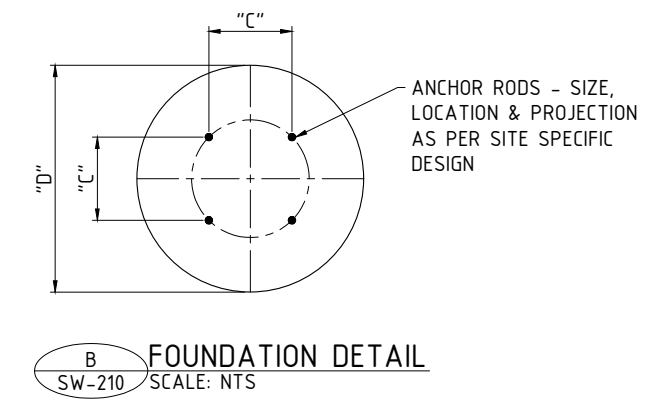
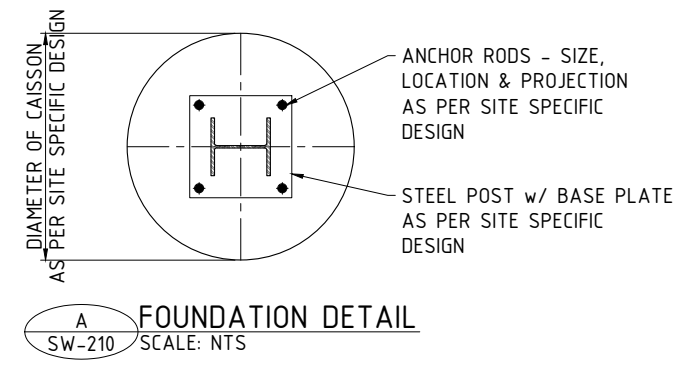
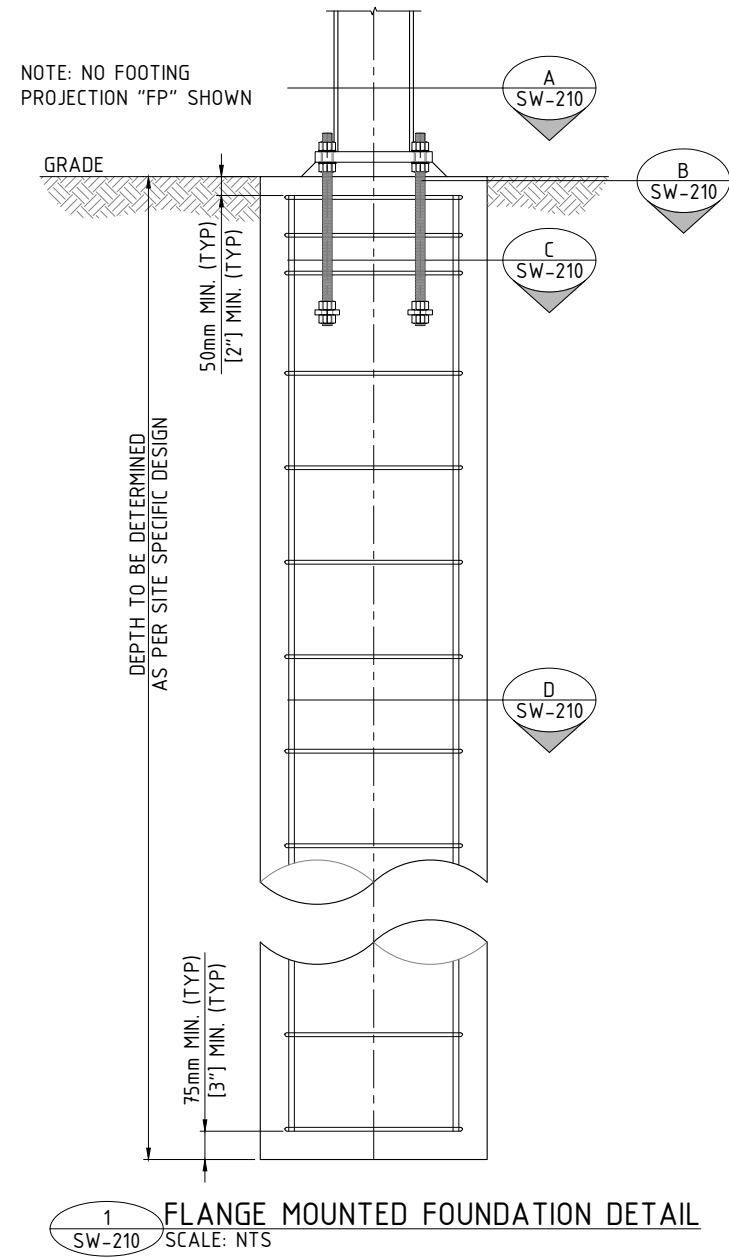


CALL TOLL FREE IN NORTH AMERICA
1-866-231-7867
www.ailsoundwalls.com www.ail.ca

SOUNDWALLS - STANDARD DRAWING
FOUNDATION DETAILS
COVER SHEET

DESIGNED	-	-	BRANCH P.O.	CUSTOMER REF.
DES. CHK	-	-	-	-
DRAWN BY	-	-	PROJECT NUMBER	DWG NO.
DWG. CHK	-	-	STD DRAWING	SW-200
				REV. 1

NOTES:
 1. DIMENSIONS ARE IN MILLIMETRES [INCHES]



January 31, 2024 9:34:38 AM

REV NO.	DATE	BY	DESCRIPTION
1	31 JAN 24	BW	GENERAL REVISIONS
0	01 DEC 16	CG	ISSUED AS STANDARD

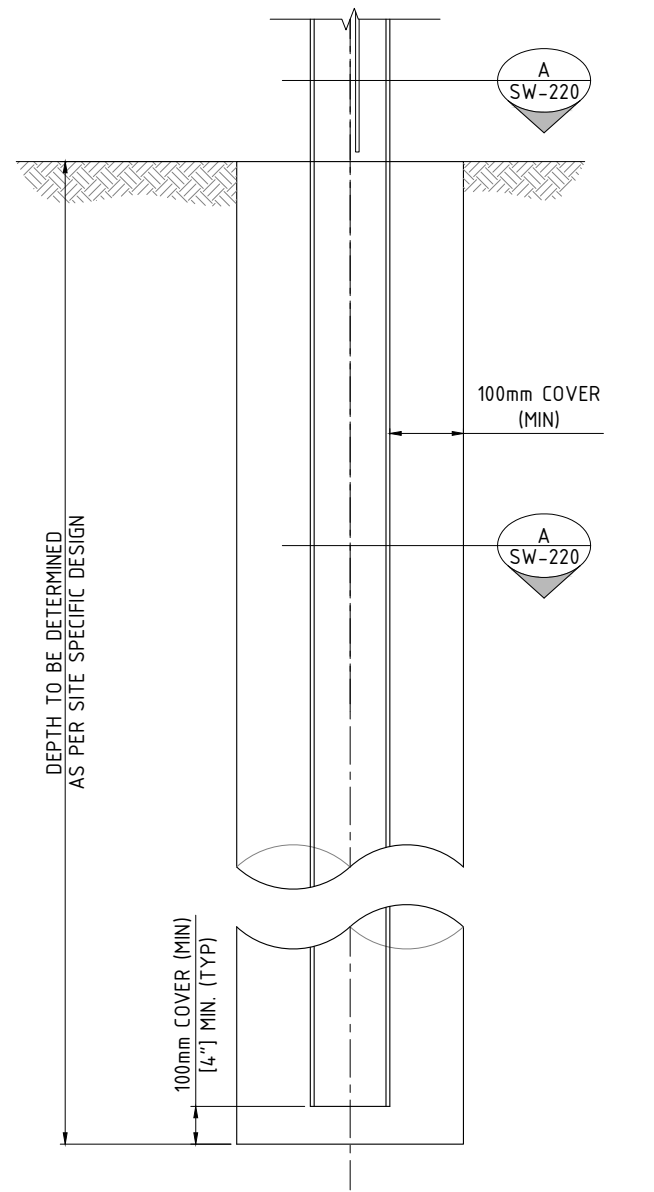


CALL TOLL FREE IN NORTH AMERICA
 1-866-231-7867
 www.ailsoundwalls.com www.ail.ca

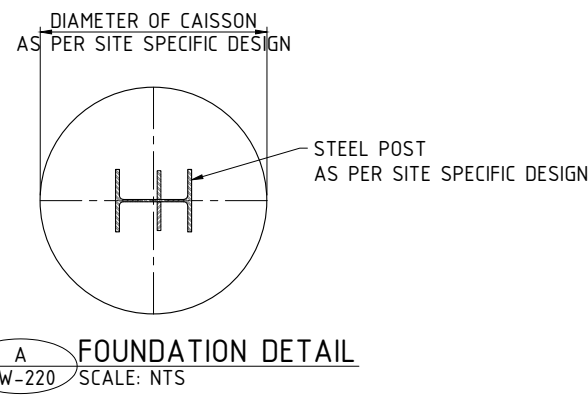
SOUNDWALLS - STANDARD DRAWING
 FOUNDATION DETAILS
 TYPICAL FOUNDATION DETAILS - FLANGE MOUNTED POST

DESIGNED - -	BRANCH P.O. -	CUSTOMER REF. -
DES. CHK - -		
DRAWN BY - -	PROJECT NUMBER	DWG NO. SW-210
DWG. CHK - -	STD DRAWING	REV. 1

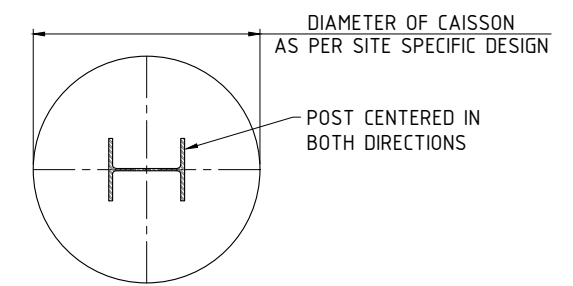
NOTES:
 1. DIMENSIONS ARE IN MILLIMETRES [INCHES]



1 DIRECT BURY POST FOUNDATION DETAIL
 SW-220 SCALE: NTS



A FOUNDATION DETAIL
 SW-220 SCALE: NTS



January 31, 2024 9:34:38 AM

REV NO.	DATE	BY	DESCRIPTION
1	31 JAN 24	BW	GENERAL REVISIONS
0	01 DEC 16	CG	ISSUED AS STANDARD

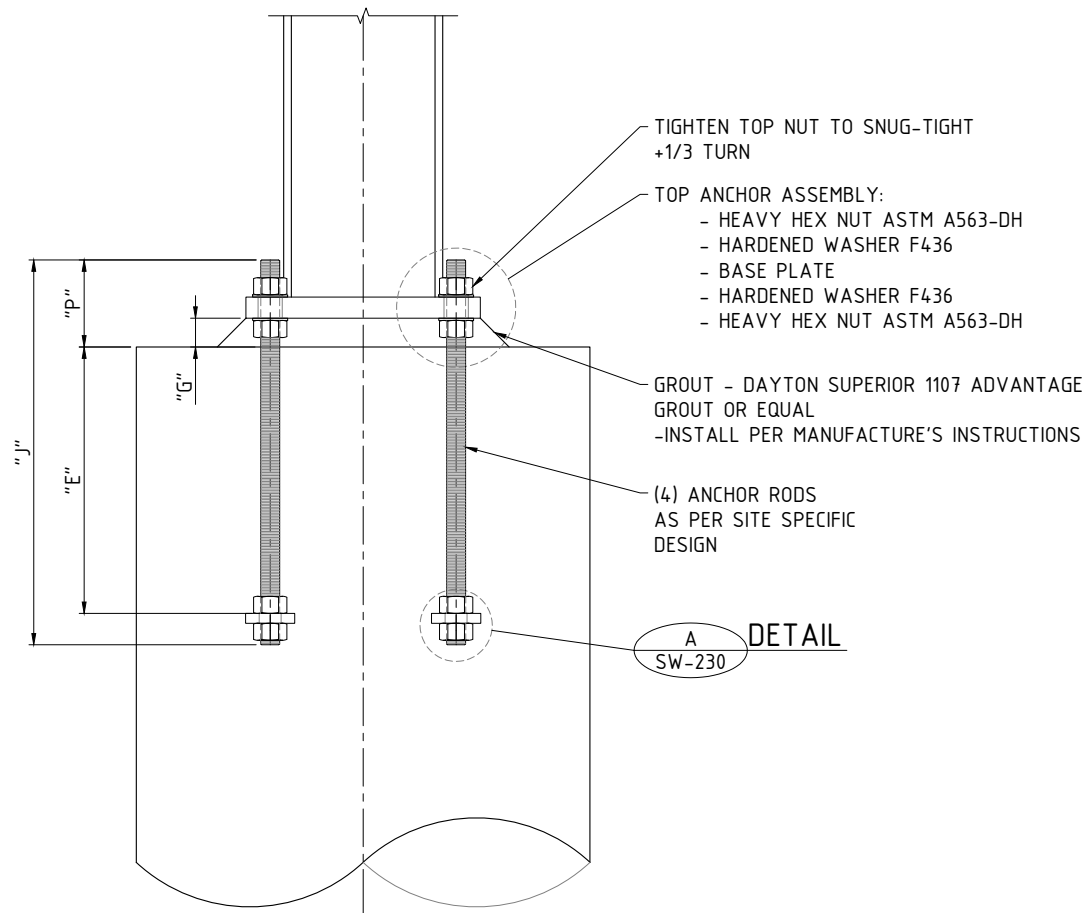


CALL TOLL FREE IN NORTH AMERICA
 1-866-231-7867
 www.ailsoundwalls.com www.ail.ca

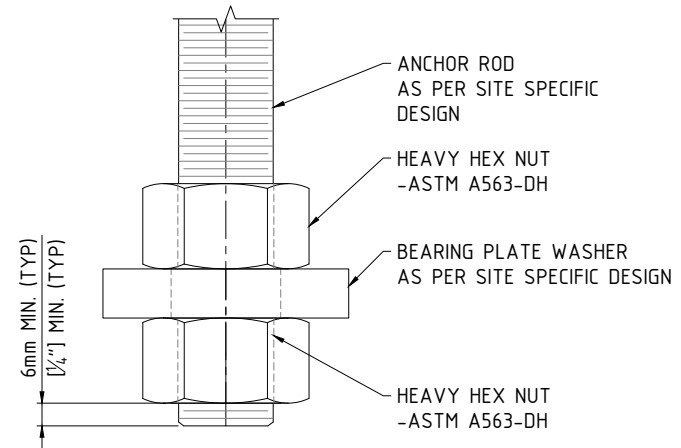
SOUNDWALLS - STANDARD DRAWING
 FOUNDATION DETAILS
 TYPICAL FOUNDATION DETAILS - DIRECT BURY POST

DESIGNED - -	BRANCH P.O. -	CUSTOMER REF. -
DES. CHK - -		
DRAWN BY - -	PROJECT NUMBER	DWG NO. SW-220
DWG. CHK - -	STD DRAWING	REV. 1

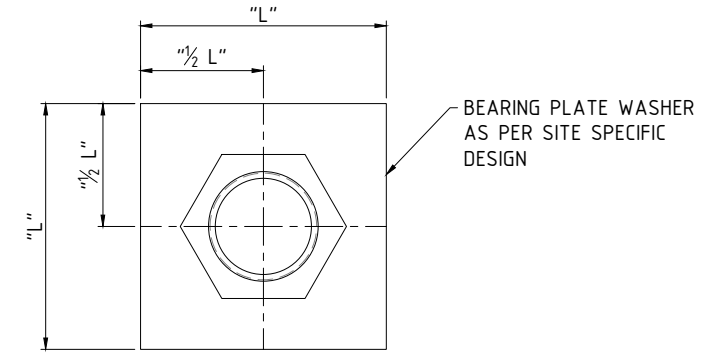
- NOTES:**
1. DIMENSIONS ARE IN MILLIMETRES [INCHES]
 2. J = TOTAL LENGTH
E = EMBEDMENT
P = PROJECTION
L = SIZE OF BEARING PLATE WASHER
ALL DETERMINED ON A SITE SPECIFIC BASIS



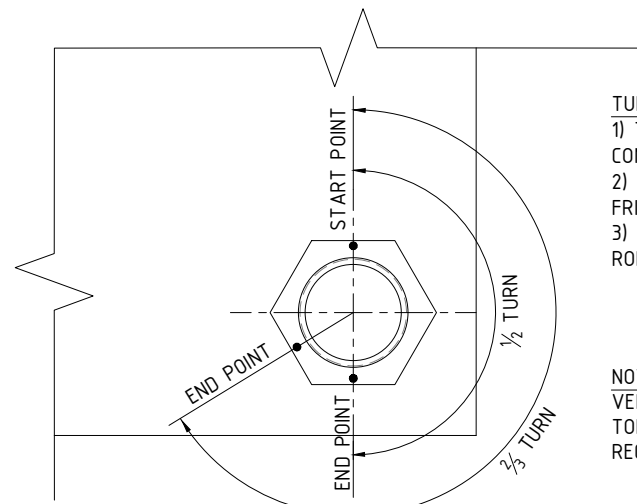
1 TYPICAL ANCHOR ROD DETAIL
SW-230 SCALE N.T.S.



A BOTTOM ANCHOR ASSEMBLY DETAIL
SW-230 SCALE: NTS



A BOTTOM ANCHOR ASSEMBLY DETAIL
SW-230 SCALE: NTS



- TURN OF NUT PROCESS:**
- 1) TIGHTEN NUT TO SNUG TIGHT WITH WRENCH, I.E. CONNECTION ELEMENTS IN FIRM CONTACT.
 - 2) APPLY ADDITIONAL TURN OF NUT TO ACHIEVE FRICTIONAL CONNECTION BETWEEN NUT AND WASHER.
 - 3) AMOUNT OF TURN DEPENDANT ON LENGTH OF ROD/BOLT
 - i) OVER 4 x BOLT DIAMETER AND NOT EXCEEDING 8 x BOLT DIAMETER OR 8" = 1/2 TURN
 - ii) EXCEEDING 8 x BOLT DIAMETER OR 8" = 2/3 TURN

NOTE:
VERIFY THESE INSTALLATION PROCEDURES AND WRENCH TORQUES TO MATCH WITH EPOXY MANUFACTURER'S RECOMMENDATIONS.

2 TURN OF NUT METHOD
SW-230 SCALE: NTS

January 31, 2024 9:34:38 AM

REV NO.	DATE	BY	DESCRIPTION
1	31 JAN 24	BW	GENERAL REVISIONS
0	01 DEC 16	CG	ISSUED AS STANDARD



CALL TOLL FREE IN NORTH AMERICA
1-866-231-7867
www.ailsoundwalls.com www.ail.ca

SOUNDWALLS - STANDARD DRAWING
FOUNDATION DETAILS
TYPICAL ANCHOR ROD DETAILS FOR GROUND MOUNTED POSTS

DESIGNED - -	BRANCH P.O. -	CUSTOMER REF. -
DES. CHK - -		
DRAWN BY - -	PROJECT NUMBER	DWG NO. SW-230
DWG. CHK - -	STD DRAWING	REV. 1